

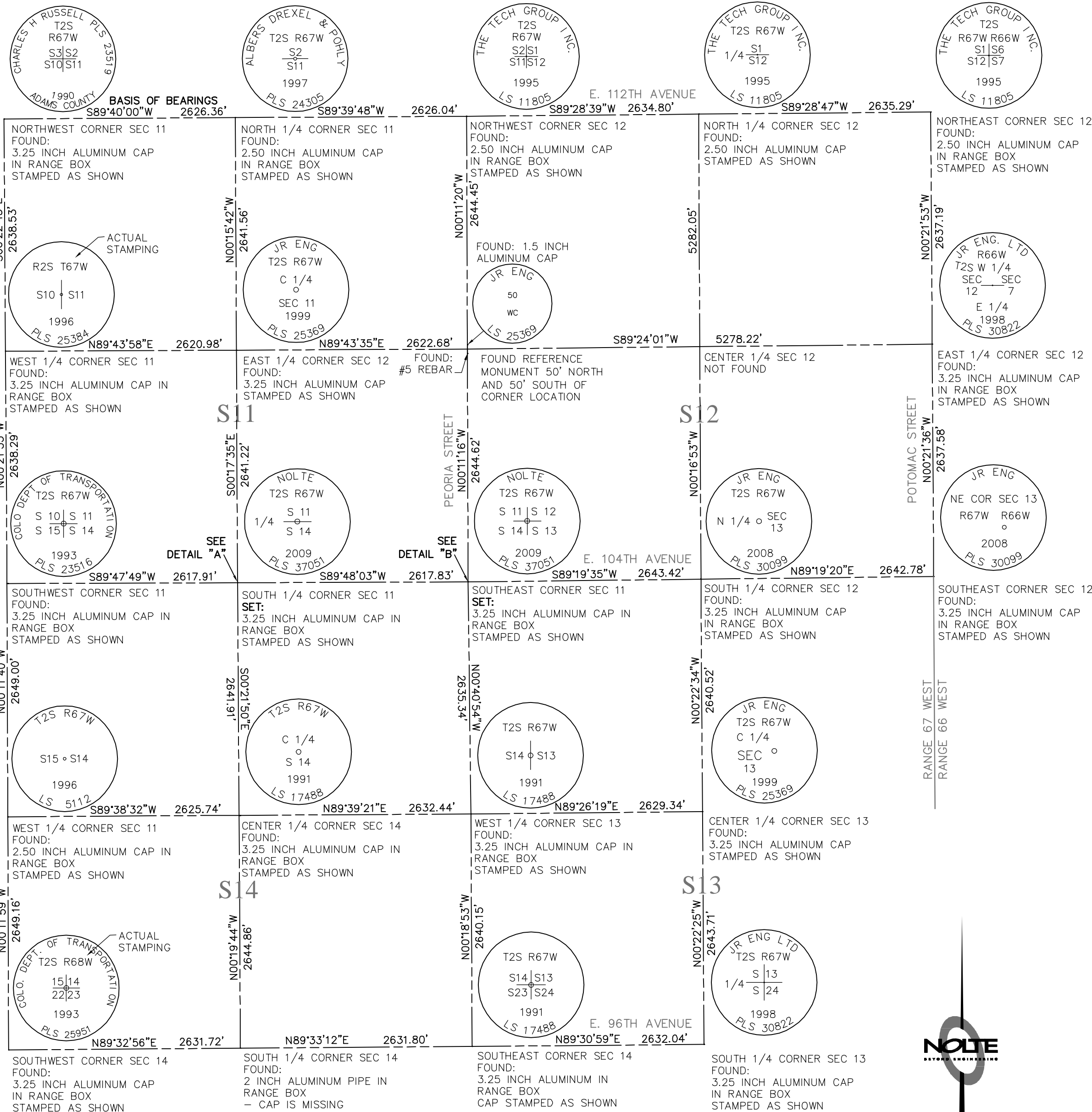
LAND SURVEY PLAT

A LAND SURVEY TO REESTABLISH THE SOUTH ONE-QUARTER CORNER AND THE SOUTHEAST CORNER OF SECTION 11
TOWNSHIP 2 SOUTH, RANGE 67 WEST OF THE SIXTH PRINCIPAL MERIDIAN
CITY OF COMMERCE, COUNTY OF ADAMS, STATE OF COLORADO.

DATE: 8/14/2009 TIME: 12:19 PM DRAWING NAME: LSP01

PATH: N:\DVB0316\Cadd\Survey\Platting\LSP

SERVER: NONE DESIGNER: ECS PROJ. MGR: ECS

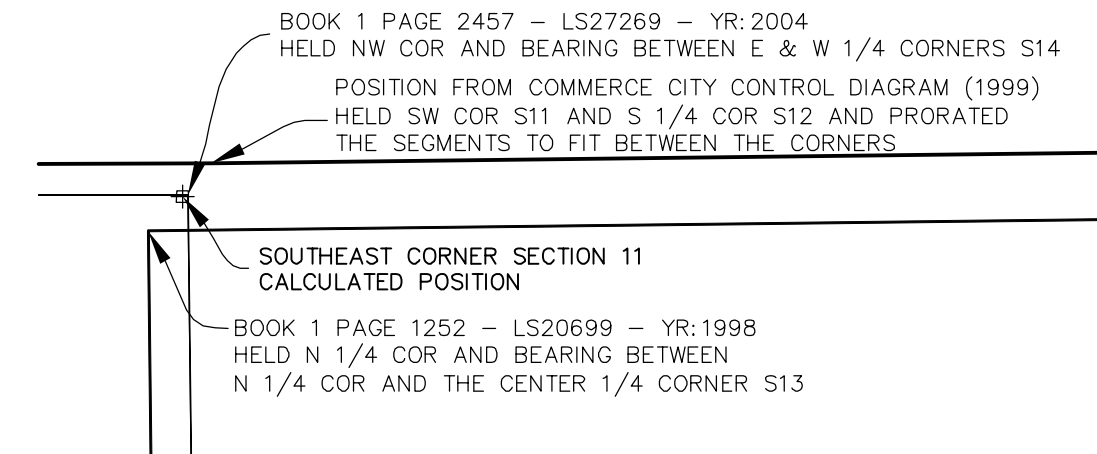


BASIS OF BEARINGS: BEARINGS ARE BASED ON NORTH LINE OF THE NORTHWEST ONE QUARTER OF SECTION 11, TOWNSHIP 2 SOUTH, RANGE 67 WEST OF THE 6TH PRINCIPAL MERIDIAN, PER THE CITY OF COMMERCE CITY CONTROL DIAGRAM DATED 08-04-99, COLORADO STATE PLANE, CENTRAL ZONE. MONUMENTED AT THE NORTHWEST CORNER OF SECTION 11 BY A 3.25 INCH ALUMINUM CAP IN RANGE BOX STAMPED "1990 PLS 23519" AND MONUMENTED AT THE NORTH ONE-QUARTER CORNER OF SECTION 11 BY 2.5 INCH ALUMINUM CAP IN RANGE BOX STAMPED "1997 PLS 24305", WITH THE LINE CONSIDERED TO BEAR S89°40'00"W.

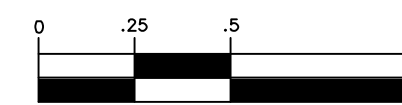
I, EDWARD C. SILVER, PROFESSIONAL LAND SURVEYOR IN THE STATE OF COLORADO, DO HEREBY STATE FOR AND ON BEHALF OF NOLTE ASSOCIATES, INC. THAT THE SURVEY REPRESENTED BY THIS PLAT WAS CONDUCTED BY ME OR UNDER MY RESPONSIBLE CHARGE ON AUG 01, 2009, AND THAT THE SAID SURVEY WAS MADE IN ACCORDANCE WITH C.R.S SECTION 38-51-106 "LAND SURVEY PLATS".



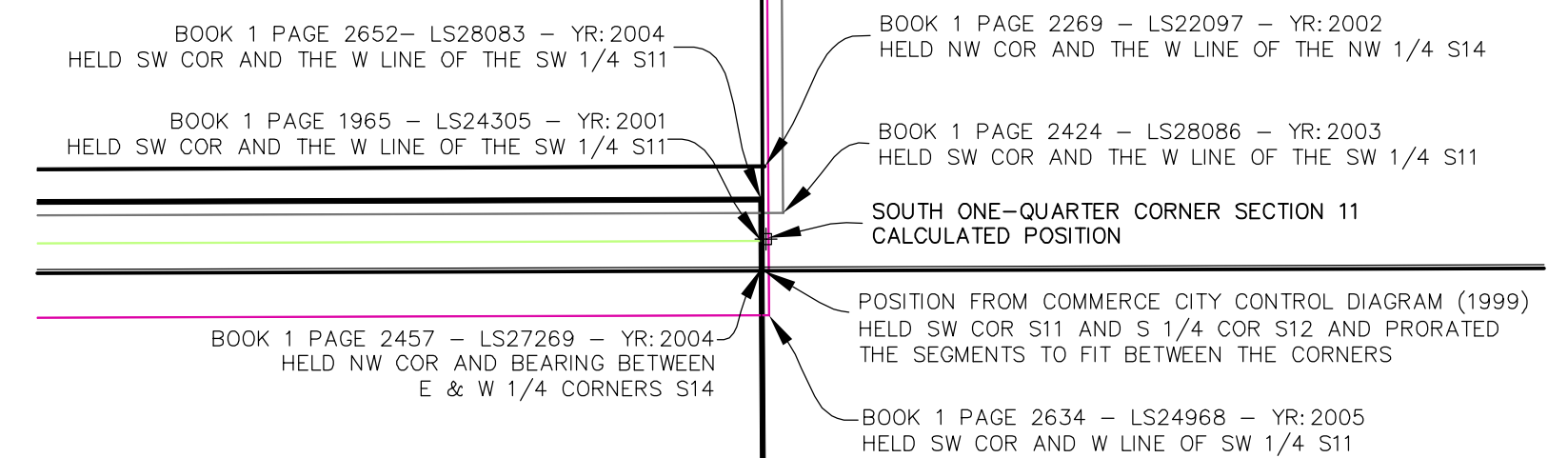
EDWARD C. SILVER, PROFESSIONAL LAND SURVEYOR
COLORADO No. 37051
FOR AND ON BEHALF OF NOLTE ASSOCIATES, INC.
8000 S. CHESTER STREET, SUITE 200
ENGLEWOOD, COLORADO 80112



DETAIL B
SOUTHEAST CORNER SECTION 11
INFORMATION USED TO DETERMINE SECTION CORNER LOCATION
SCALE: 1" = 0.5'



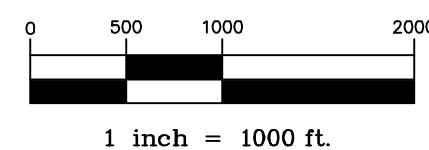
1 inch = .5 ft.



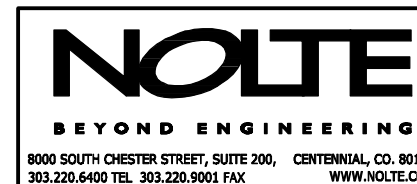
DETAIL A
SOUTH ONE-QUARTER CORNER SECTION 11
INFORMATION USED TO DETERMINE SECTION CORNER LOCATION
SCALE: 1" = 0.5'

NOTES:

- 1) THE "SET" POSITIONS FOR THE SOUTH ONE-QUARTER CORNER AND THE SOUTHEAST CORNER OF SECTION 11 WERE CALCULATED BY AVERAGING THE LOCATIONS OF THE SAID CORNERS FROM THE VARIOUS LAND SURVEY PLATS THAT USED THE SAID CORNERS AS CONTROL. ALSO INCLUDED IN THE AVERAGE POSITION ARE BEARINGS AND DISTANCES FROM THE CITY OF COMMERCE CITY CONTROL DIAGRAM PUBLISHED IN 1999.



1 inch = 1000 ft.



CITY OF COMMERCE CITY
8602 ROSEMARY STREET
COMMERCE CITY, CO 80022

DATE:	08/14/09
JOB NUMBER:	DVB0316
SHEET 1 OF 1	